

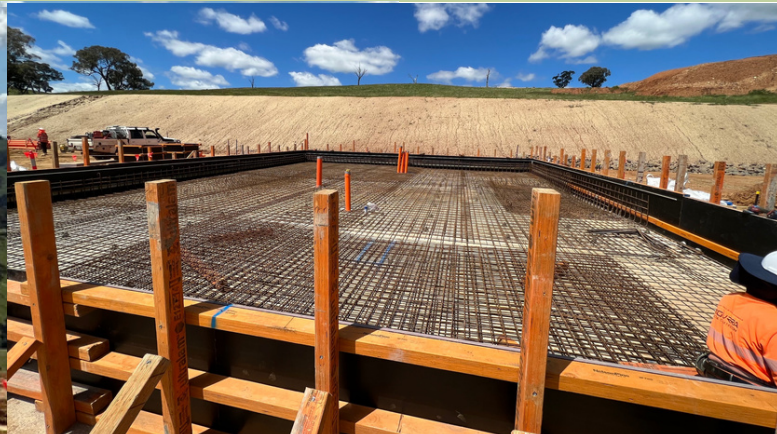
Flyers Creek Wind Farm

Construction Newsletter No. 7

October – November 2022

Construction update

- Turbine foundations were constructed for five wind turbines during October and November
- Earthworks for access tracks and turbine hardstand areas are progressing across the site
- Substation works at the northern end of the site are well progressed and the concrete slab for the transformer foundation has been completed
- Tree felling for the 132kV powerline is complete with log haulage now expected to be completed during December 2022
- Construction of the 132kV powerline work commenced during November 2022
- The Gap Road intersection is now open to traffic
- GLC continues to make repairs to local roads as a priority
- The first turbine component deliveries are expected to commence during December 2022

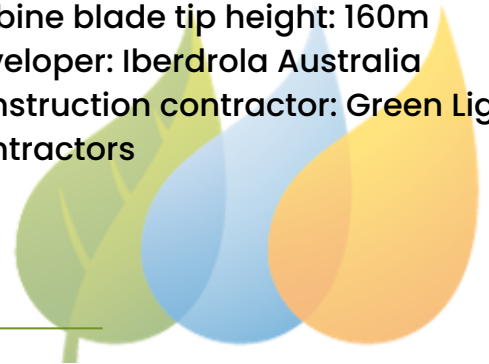


Construction program

- **December 2022:**
 - Continue turbine foundation concrete pours
 - Continue 132kV high voltage powerline construction
 - Commence turbine component deliveries
- **Early 2023:**
 - Upgrade works to Gap and Halls Road
 - 33kV powerline installation works on Errowanbang Road
- **Late 2023:** Wind farm target completion

FLYERS CREEK AT A GLANCE

- Number of Turbines: 38
- Capacity: 145 Megawatts
- Turbine blade tip height: 160m
- Developer: Iberdrola Australia
- Construction contractor: Green Light Contractors



Flyers Creek Wind Farm

Construction Newsletter No. 7

October – November 2022



Errowanbang Road, 14 November

Local road network

Unseasonal wet weather and flooding events have hampered construction work at Flyers Creek and added to the damage to local roads, as well as disruptions for local road users.

Erosion and sediment control works are ongoing to prepare the work sites for rain events.

We apologise for the traffic delays on Errowanbang Road and for the inconvenience to local residents.

Road repairs

Temporary repairs to areas of Errowanbang Road and Panuara Road are ongoing.

Iberdrola and GLC are in regular contact with Blayney Shire Council to coordinate immediate and more substantial road works and road repairs.



Gap Road – Errowanbang Road intersection



Backfilling of Gap/Errowanbang Road intersection, 21 November

Completion of the intersection work was delayed during November in order to prioritise emergency repairs to Errowanbang Road.

The Gap-Errowanbang Road intersection is now open and is expected to be sealed during December. Reduced speed limits remain in place until the intersection is sealed.

Flyers Creek Wind Farm

Construction Newsletter No. 7
October – November 2022

Out of hours work November 2022 – March 2023

Our hours are generally restricted to the standard construction hours of 7am to 6pm Monday to Friday and 8am to 1pm Saturday.

Due to prolonged wet weather we are carrying out some construction activities on Saturday afternoons and Sundays. This will assist with the construction of all-weather access tracks and timely completion of the project.

From early November we have worked out of hours on Saturdays from 1- 6 pm and Sundays from 8am – 5pm. The out of hours work will extend to March 2023.

The work involves general earthmoving activities, with no impulsive or tonal noise emissions (rock breaking, rock hammering, pile driving), blasting activities, or highly intrusive noise generating activities.

On Saturday afternoons the work will include infrequent heavy vehicle truck movements along Errowanbang Road, with no heavy vehicle truck movements on public roads on Sundays.

Please note that that turbine foundation concrete blinding pours may be carried out on Saturday afternoons, but the main turbine foundation concrete pours will be carried out Monday – Friday only.

Carcoar Show 2023



Iberdrola was pleased to sponsor several prizes at the Carcoar Show in October.

Our staff were equally pleased to attend and enjoy the delights of Carcoar's first show since 2019!!



For further information about Flyers Creek Wind Farm, or to be added to our mailing list please email: flyerscreek@iberdrola.com.au

You can also provide feedback about the project to Iberdrola by phone or post at all times:

- Phone (24-hour line): 1800 917 372
- Post: Iberdrola Australia, Level 17, 56 Pitt Street, Sydney, NSW, 2000

<https://www.iberdrola.com.au/our-assets/development-assets/flyers-creek-wind-farm/>



Turbine component deliveries

TRANSPORT ROUTE

From the Port Kembla area turbine components will be transported via:

- Picton Road & the Hume Highway to Yass
- Lachlan Valley Way through Boorowa and Cowra
- The Mid Western Highway
- Errowanbang Road, Gap & Halls Roads to the site

Turbine blade being delivered to the Murra Warra Wind Farm in Victoria (photo credit ARES group)

- The GE model wind turbines at Flyers Creek are 160m high and will be transported to the site in sections. The largest components are the blades which are 67m long.
- ARES consultants will be responsible for transporting the turbine components from Port Kembla to the site.
- Transportation will be by oversized trucks and trailers, escorted by pilot vehicles and sometimes NSW police, with signs and flashing lights.
- We expect the transportation of turbine components to commence during December 2022. The deliveries are expected to take five to six months.
- There will be up to 18 oversized deliveries to site per week from Mondays to Saturdays.
- Trucks are planned to arrive on site at Flyers Creek either around 7.30am or between 9am and 3pm.
- A trial run with an empty trailer will be carried out in advance of the turbine component deliveries.
- Local road users may experience some extended journey times. ARES, our transportation consultant will do everything they can to minimise disruption.
- If you are on the road behind an oversized load, please remain patient.
- Emergency plans and procedures are in place in the event of a breakdown on a public road.

Wind turbine foundation concrete pours

Turbine foundations concrete pours commenced during October 2022.

Each turbine foundation requires around 380 cubic metres of concrete. Foundations are poured in one day and involve around 60 concrete truck loads (120 return trips) from our on-site concrete batching plant to the site.

Several of the turbine foundation pours have run late into the night due to technical issues which have since been resolved.

We would like to thank local people for their patience during this phase of construction.



Blasting for turbine foundations

Due to geotechnical conditions on site, controlled blasts will be required at up to 10 turbine foundations located in the central part of the site. GLC has engaged a specialised blasting contractor to carry out the work. It is expected that one controlled blast per turbine foundation will be required.

The controlled blasts will be contained and exclusion zones will be implemented. Neighbours to the work areas will be notified ahead of the blasting work, which is due to commence during December.

MEET THE TEAM

GREG GUINEA:
SENIOR HEALTH AND
SAFETY ADVISOR
FROM: BRISBANE, QLD



Greg works for Green Light Contractors, lead construction contractor, Flyers Creek Wind Farm

What does your role involve?

To assist in all aspects of Health, Safety, Environment & Security on the project site. I advise all key site personnel and ensure awareness of Health and Safety best practice in the industry, and ensure compliance to all GLC safe systems of work for the site staff and contractors.

What is your professional qualification or trade?

Health Science, specialising in health & safety.

What career path led you here to Flyers Creek?

A trade apprenticeship in Carpentry and Joinery which merged into various projects within oil and gas, mining, marine and civil industries.

Is Flyers Creek different to the last construction project you worked on?

This is my first renewables project, but overall it's not hugely different to large civil construction jobs.

What do you enjoy about your job?

Achieving milestones injury free.

And the most challenging part of your job?

Staff on site bring an enormous range of personal and professional experience to the project across many nationalities. Collaborating with and coordination of tasks with my colleagues is a challenge that I enjoy.

What do you like to do in your downtime?

The three favourite things in my life are family, hiking and travelling.

